



## 33 Tallow Wharf Bircherley Green, Hertford, SG14 1FF

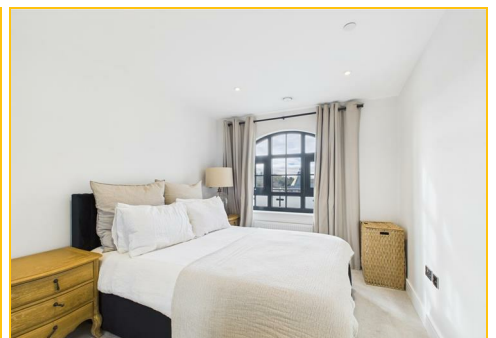
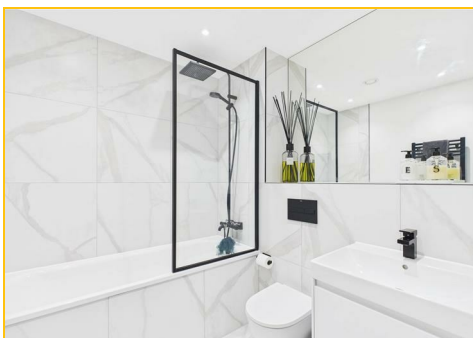
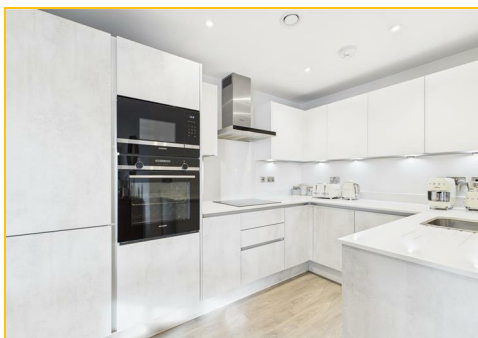
£1,600


AVAILABLE EARLY MARCH! Lanes are pleased to offer this one-bedroom apartment with a tasteful interior, situated on the THIRD FLOOR in this newly built, desired development. Located within the heart of Hertford, the town centre offers a variety of shops, restaurants, bars and great transport links.

Lea Wharf, an eagerly anticipated and truly breath-taking development consisting of just 98 one and two bedroom apartments situated on the banks of the River Lea. Lea Wharf has been designed to sympathetically integrate and embrace Hertford's historic architecture and design whilst providing beautiful living space within minutes' of Hertford's bustling town centre which plays host to a collection of exceptional restaurants and bars, a number of local and high-street stores, numerous supermarkets along with two mainline train stations offering easy access into the City.

The sophisticated interiors will include features that enhance the industrial wharf-style feel of the development with black window frames and fittings, contemporary German-designed kitchens fitted with quartz worktops and integrated Siemens appliances brings an element of luxury to the apartments along with unique, urban-style bathrooms.

\*COUNCIL TAX BAND B\*



Energy Efficiency Rating		
	Current	Potential
Very energy efficient - lower running costs		
(92 plus) <b>A</b>		
(81-91) <b>B</b>		
(69-80) <b>C</b>		
(55-68) <b>D</b>		
(39-54) <b>E</b>		
(21-38) <b>F</b>		
(1-20) <b>G</b>		
Not energy efficient - higher running costs		
<b>England &amp; Wales</b>	EU Directive 2002/91/EC	

Environmental Impact (CO <sub>2</sub> ) Rating		
	Current	Potential
Very environmentally friendly - lower CO2 emissions		
(92 plus) <b>A</b>		
(81-91) <b>B</b>		
(69-80) <b>C</b>		
(55-68) <b>D</b>		
(39-54) <b>E</b>		
(21-38) <b>F</b>		
(1-20) <b>G</b>		
Not environmentally friendly - higher CO2 emissions		
<b>England &amp; Wales</b>	EU Directive 2002/91/EC	